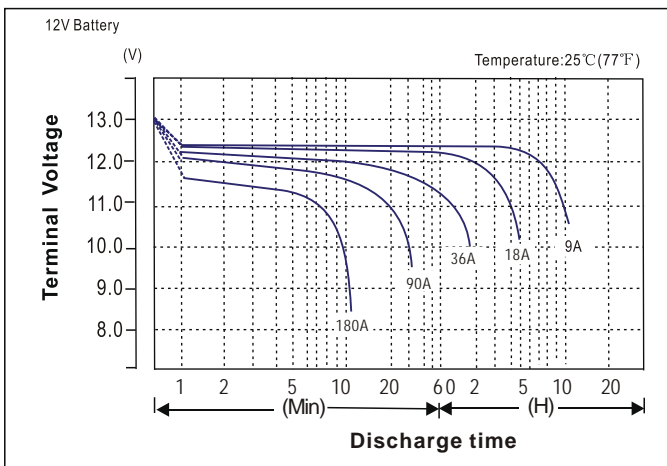
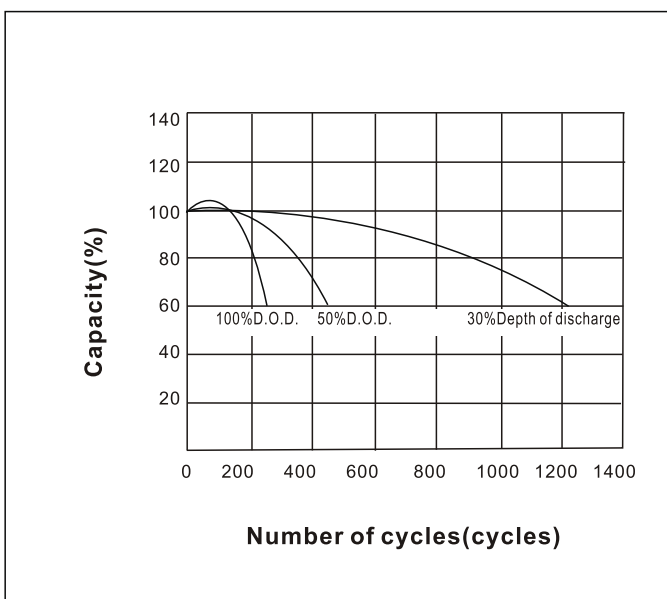
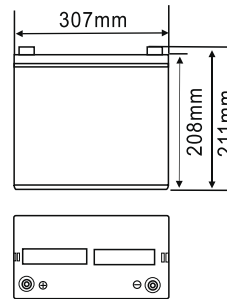
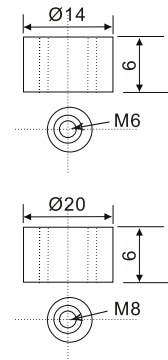


UTY 12V-90 AH

Specifications

Nominal Voltage		12V
Rated Capacity (10 HR)		90AH
Dimensions ± 1mm	Total Height	211mm(8.31 inches)
	Height	208mm(8.19 inches)
	Length	307mm(12.09 inches)
	Width	169mm(6.65 inches)
Weight		27.5kg(60.64 lbs)±3%
Terminal		M6, M8

Discharge characteristics

Cycle Life on D.O.D (25°C)

Appearance

Terminal Type (mm)

Characteristics

Capacity 77°F (25°C)	10 hour rate(9.0A)	90.0AH
	5 hour rate(14.8A)	74.0AH
	1hour rate(54A)	54.0AH
	15 min rate(150A)	37.5AH
Internal Resistance	Full charged Battery 77°F (25°C)	5.5m Ω
	104°F (40°C)	102%
Capacity affected by Temperature (10 hour rate)	77°F (25°C)	100%
	32°F (0°C)	85%
	5°F (-15°C)	65%
	Self-Discharge 77°F (25°C)	Capacity after 3 month storage
	Capacity after 6 month storage	82%
	Capacity after 12 month storage	64%
Max. Discharge Current 77°F (25°C)	800A(5S)	
Charge (constant voltage)	Cycle	Initial Charging Current 27 A or Smaller 14.50-14.90V/77°F (25°C)
	Float	13.50-13.80V/77°F (25°C)

Constant Power Discharge Watts Per Cell @77°F (25°C)

Time	5min	10min	15min	30min	1hr	2hr	3hr	5hr	8hr	10hr	20hr	
9.60	A	288	190	153	102.6	54	31.5	23.1	14.9	10.53	9.45	5.1
	W	2975	2028	1641	1103	583	346	257	169	121	109	59.3
10.20	A	279	171	144	98.1	50.8	30.1	22.5	14.6	10.26	9.27	4.95
	W	2948	1913	1613	1101	574	346	261	170	120	109	58.1
10.80	A	221	144	117	84.6	47.5	28.6	21.4	14	9.9	9.0	4.86
	W	2479	1666	1350	980	553	335	253	166	117	107	57.9